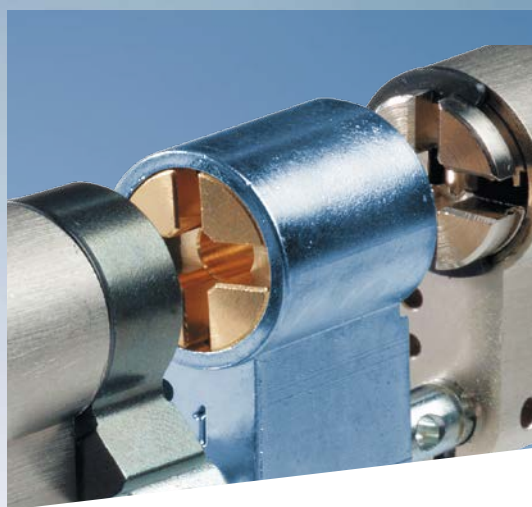
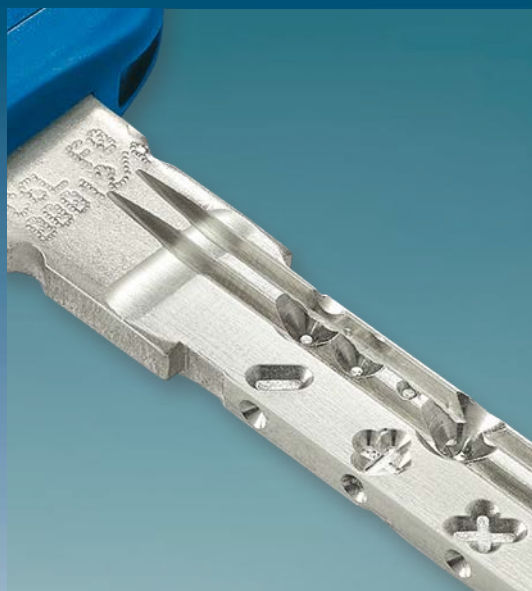


MADE
IN
ITALY

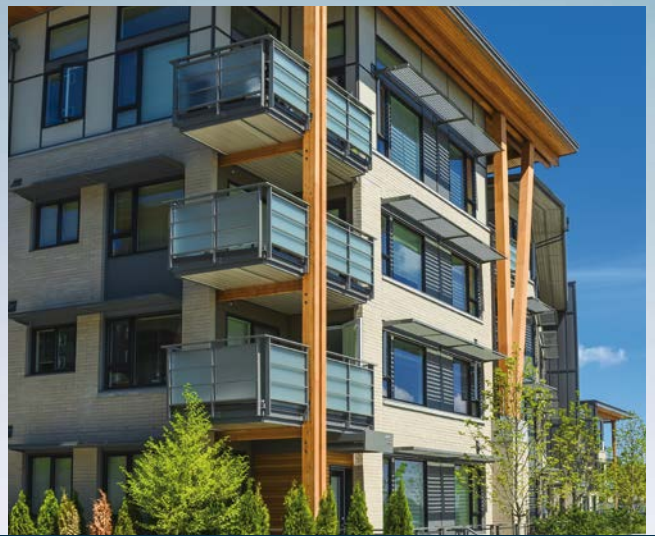
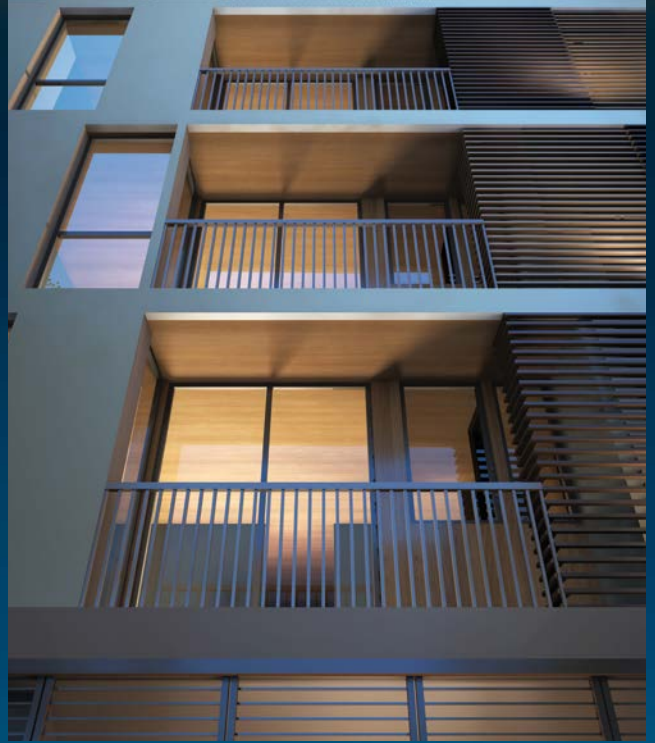


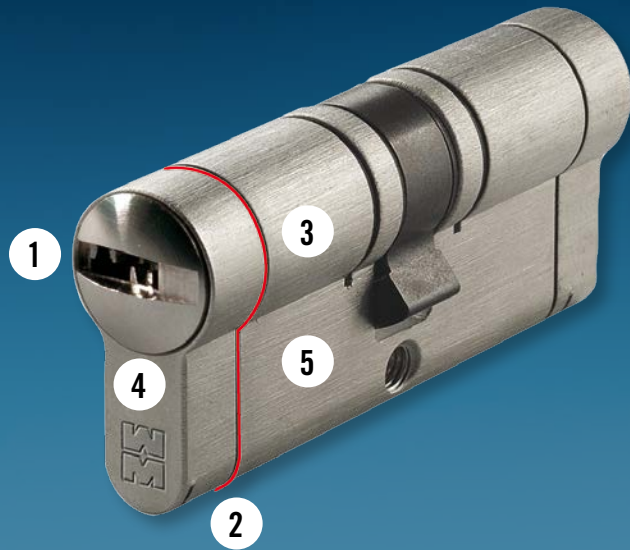
CHAMPIONS





HIGH SECURITY CYLINDERS



safeguarding your security





- 1 Mottura lifetime patented MM key profile 
- 2 **Controlled breaking** shear in the event of break-in.
- 3 **Updated internal anti-burglary devices** to counter the most common picking techniques, key decoding and break-in attempts.
- 4 **Bumping and Picking resistant, certified by ICIM to the highest levels** established by the VOLUNTARY reference standard.  
- 5 **Tracing resistant:** coding is protected against break-in techniques based on the "tracing" or "impression" of the key. 

MOTTURA SECURITY CYLINDERS UNI EN 1303 CERTIFIED RESISTANT TO BUMPING, PICKING, TRACING



- 6 **New key colour and design and ergonomic lines** for a more comfortable use. Technical approach that conveys **strength and durability**.

Round coloured inserts to make them easily recognizable.
Triangular coloured inserts or coloured shells to identify the function.

6 common features that make each of the 6 new Champions® the best in their respective categories!

MCHAMPIONS

HIGH SECURITY CYLINDERS

The range



MPRO

EXCLUSIVE "MATHEMATICAL" KEY PROTECTION SYSTEM

Key with **LIFETIME** patented MM profile. Patented side and upper profile controls, aligned and shaped.

Key duplication by Authorized Centres showing Mottura decal or Mottura Clubs



MMODULAR

"MATHEMATICAL" KEY AND EXTENDIBLE MODULES

The same technology of PRO with extendible modules, to fit any length between 31-31 and 61-71.

Key duplication by authorized Centres showing Mottura decal or Mottura Clubs



MC28PLUS

"MATHEMATICAL" KEY AND MOBILE ELEMENT

Patented side and upper profile controls, aligned and shaped. Mobile element to protect key duplication.

Protected key duplication, allowed at Mottura Club centres only





multidesmo

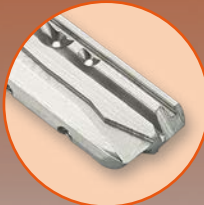


M C48

**HIGHEST SECURITY SOLUTIONS
IN CHAMPIONS® RANGE**

Aligned side profile controls.
Desmodromic track and mobile element
for the protection of key duplication.

Protected and controlled key
duplication, made in the factory through
Mottura Club centres only

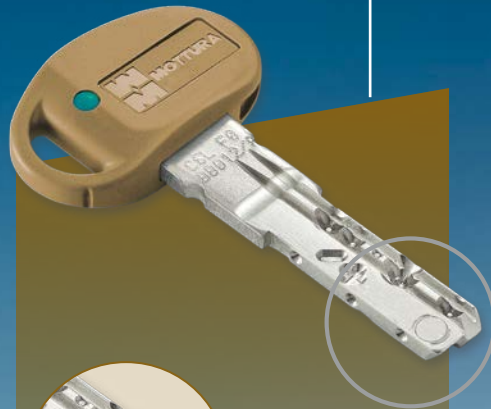


M C43PLUS

**DOUBLE CODING SYSTEM
WITH DESMODROMIC TRACK**

Aligned side profile controls.
Desmodromic track combined with
rotating active pins.

Protected key duplication, allowed at
Mottura Club centres only



M C39

**“MATHEMATICAL” KEY AND
ANTI-PICK MAGNET**

Patented side and upper profile
controls, aligned and shaped. Active
pin with magnetic positioning.

Protected key duplication, allowed at
Mottura Club centres only



CHAMPIONS

HIGH SECURITY CYLINDERS

Technology

Resistance to Picking and Bumping

Picking and Bumping are two burglary techniques based on the illegal manipulation of the cylinder with picks or key decoding tools.

All Champions® cylinders are certified by ICIM at the highest level established by the VOLUNTARY reference standard.



Resistance to tracing

Coding is protected against break-in based on "tracing" or "impression" techniques.

In the event of counterfeit key, the counter-pins are "trapped", preventing the rotation of the key and the plugs, thus irreversibly blocking the cylinder.



Nickel silver key with LIFETIME PATENTED MM profile

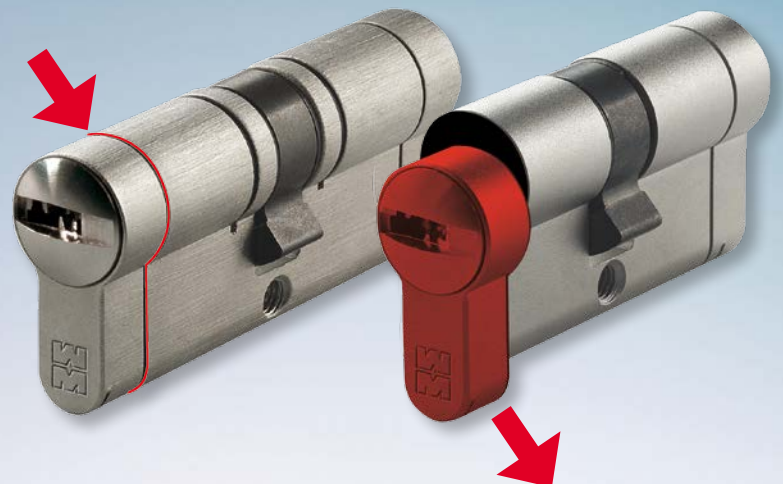
The lifetime patented MM profile is an exclusive Mottura innovation on all Champions keys (customized versions only), to safeguard the legal key duplication.

The "Nickel silver" stem gives strength, durability and smooth rotation.



Burglar resistant breaking shear

In the event of burglary, the SHEAR favours the controlled breakage of the cylinder, avoiding that a through-passing hole remains open on the lock, through which the door could be opened. Nevertheless, **the door can be opened with the key from the outside.**



Design



New key colours and design

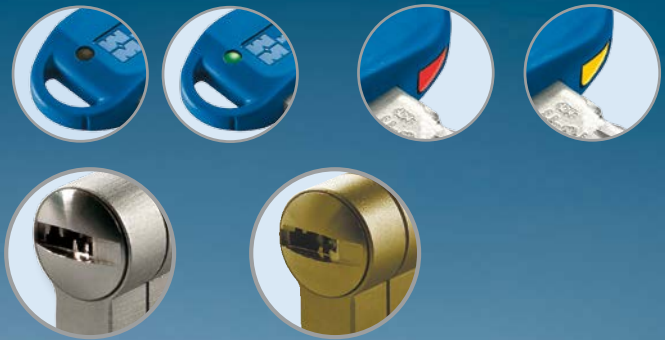
With ergonomic lines, for a more comfortable use. Technical approach that conveys strength and durability.

Round coloured inserts

to make them easily recognizable.

Triangular coloured inserts

For cylinders with "Vario" function the keys have **coloured triangular inserts** to recognize and identify the function.



Brushed nickel-plated finish

to better integrate with the accessories (brushed brass finish on request).

Champions® types

KEY-KEY

Frictioned key version, available on request. Opens from the outside even with a key inserted on the inside.



KEY-KNOB PROVISION

Knob fitting \varnothing 8 mm (in replacement of the 10 mm) to unify the various types of Mottura knobs (except Modular).



HALF CYLINDER



WITH KNOB

(except Modular).



KEY- ADJUSTABLE KNOB PROVISION



safeguarding your security

CHAMPIONS

HIGH SECURITY CYLINDERS



Mottura Champions® security cylinders are certified by ICIM INSTITUTE as **HIGHLY resistant to bumping and picking.**

The standard foresees various parameters. For each of these parameters, the complete Champions® range is by far higher than the limits imposed by the standard.

CYLINDERS CLASSIFICATION

According to the UNI EN 1303 standard

Category of use	Cyclic test	Door mass	Suitable for use on smoke/fire proof doors	Safety	Corrosion resistance	Key security	Resistance to drilling	Resistance to "Picking"	Resistance to "Bumping"
1	2	3	4	5	6	7	8	9	10
1	6	0	1	0	C	6	2	◆	1

- 1 Used by people who know how to use it and with little possibility of misuse
 - a single class characterized by the No. 1
- 2 Maximum resistance obtainable in duration testing (100,000 cycles)

The reference standard foresees 3 levels:

 - Level 4 25000 cycles
 - Level 5 50000 cycles
 - Level 6 100000 cycles
- 3 No requirement requested
- 4 Suitable for use on smoke/fire proof doors. The reference standard foresees 2 levels:
 - Level 0 unsuitable for use on smoke/fire proof doors
 - Level 1 suitable for use on smoke/fire proof doors
- 5 No requirement requested, referring to the safety of persons (safety)
- 6 Maximum classification, high resistance to corrosion (96h) and temperature

The reference standard foresees 4 levels:

 - Level 0 no requirement of corrosion and temperature resistance
 - Level A high resistance to corrosion and no requirement to temperature resistance
 - Level B no requirement of corrosion resistance and temperature resistance from $-20^{\circ}\text{C} \div +80^{\circ}\text{C}$
 - Level C high resistance to corrosion and temperature from $-20^{\circ}\text{C} \div +80^{\circ}\text{C}$
- 7 Maximum classification in terms of key identification requirements.

The reference standard foresees 6 levels:

 - One of the characteristics is the number of different possible combinations ranging from a minimum of 100 combinations (level 1) to a maximum of at least 100,000 (level 6)
- 8 Maximum classification in terms of resistance to drilling and mechanical forcing

The reference standard foresees 3 levels:

 - Level 0 no resistance requirement to drilling/mechanical forcing
 - Level 1 3/5 minutes of resistance
 - Level 2 5/10 minutes of resistance
- 9 Resistance to "PICKING"
- 10 Resistance to "BUMPING"

Certifications



The packaging of the security cylinder resistant to Bumping, Picking and Tracing, are marked with the acronyms BKC and TRC.



The keys BLISTER, also containing the card, is factory sealed and has a small window to check the number of keys in the package (up to 5).



CHAMPIONS

HIGH SECURITY CYLINDERS



MPRO


Champions® PRO is ideal for a wide range of applications.

EXCLUSIVE “MATHEMATICAL” KEY PROTECTION SYSTEM



LIFETIME patented MM key profile. Patented side and upper profile controls, aligned and shaped. Two exclusive Mottura innovations.

Cylinders featured with **controlled breaking shear** in the event of break-in attempt.

Patented side profile controls, aligned and shaped  that, in case of picking, bumping and tracing, irreversibly block the cylinder, preventing the opening. **Tens of millions of combinations** make Champions® PRO ideal for master key systems.


Extremely hard plugs, caps and pins to increase **security against drilling**. Pins and counter-pins with **anti-pick** profiling.

Resistance to Bumping and Picking, certified by **ICIM** to the highest levels established by the VOLUNTARY reference standard.



Resistance to Tracing: coding is protected against break-in techniques based on “tracing” or “impression” of the key.



Key with **MM patented profile** 
Duplication by **MOTTURA Centres or Mottura Club**.
Customized profiles available.



Blue key grip and differently coloured round inserts.



For cylinders with **“Vario”** function (emergency key that disables the lost or stolen one) or with **“Construction Keys”** (temporary key that is disabled by the definitive keys when work is completed), **coloured triangular inserts** are supplied to identify the function.



“Construction key” and “Vario system” as options.

“Matic 1000” option with which the “construction key” function allows to manage up to 1600 cylinders.

“Set & Reset” **service key** option allows to temporarily disable the service keys.

Brushed nickel-plated finish.

Brushed brass finish available on request.

"Set & Reset" service key and "Matic 1000" options



"Set & Reset" service key option

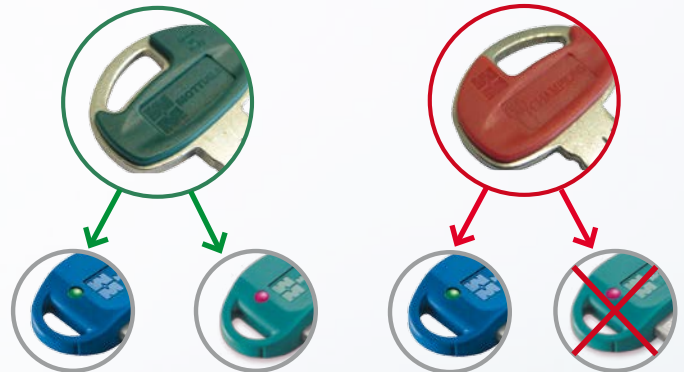
An absolutely outstanding technical innovation: both **master** and **service keys** work on the same cylinder, but the service key can be **temporarily disabled** and then enabled again later.

For example, when going on holiday, you may block access to those who hold service keys and restore it on your return.

Available on "Mottura" profile version only.

SUPPLY (1 + 3/5 + 1):

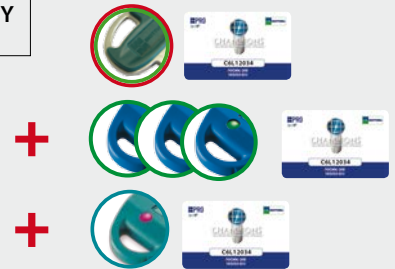
- **1 key with green and red half-shell**, used to activate / deactivate the service key.
- **3/5 blue master keys with coloured insert** that allows the normal use of the cylinder (always).
- **1 turquoise service key**.



Green side: the service key operates normally. The cylinder is opened both by the **blue master** key and by the **turquoise service** key.

Red side : the service key **DOES NOT** operate. The cylinder is **only** opened by the **blue master** key.

"SET & RESET" SERVICE KEY OPTION- 1+3/5+1



Matic 1000

The "Construction key" with black grip (the same for groups of cylinders) can open **up to 1600 different cylinders** and is **automatically disabled** on the first use of the master key.

The "Construction key" function is notably increased with the **Matic 1000** option.

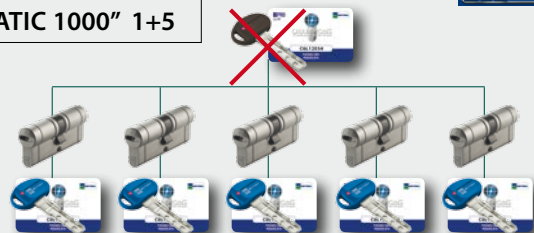
Available on "Mottura" profile version only.

SUPPLY (1+5):

1 key with black grip any 5 cylinders.



"MATIC 1000" 1+5



safeguarding your security



KEY ALIKE SYSTEM

Key Alike solution permits to open any door/room/location with the same key, even if cylinders types are different. With "Matic 1000" option the "Construction key" can manage up to 1600 cylinders.



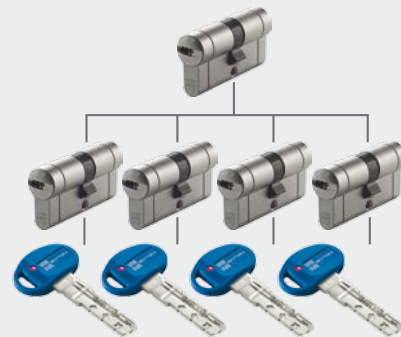
One single key can open:

1. Front door
2. Pedestrian or car gate
3. Garage door
4. Backdoor
5. Safe
6. Mail box
7. Padlocks, Cellar...



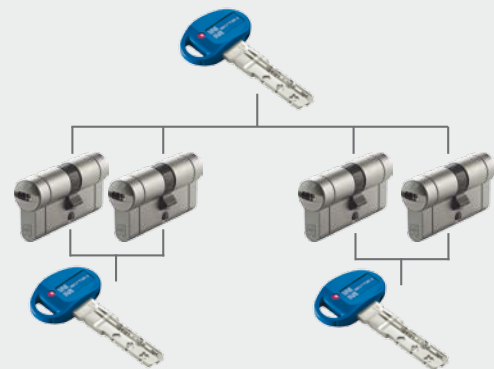
MAIN LOCK SYSTEM

Main Lock solution is suitable to manage master key systems of apartments buildings. It permits to have differently coded keys, that are anyway able to open common crossings, such as common front gates (1), pedestrian gates (2), boiler rooms (3)...



GROUP MASTER KEY SYSTEM

Group Master Key solution, allows that any door/room/location can be opened by its own key or by a master key that opens the cylinders of an entire area or department, but not those in another group of rooms; finally, a **general master key** opens the cylinders of all departments.



Master key systems available for the whole Champions® range



TANDEM SYSTEM WITH "CONSTRUCTION KEY"

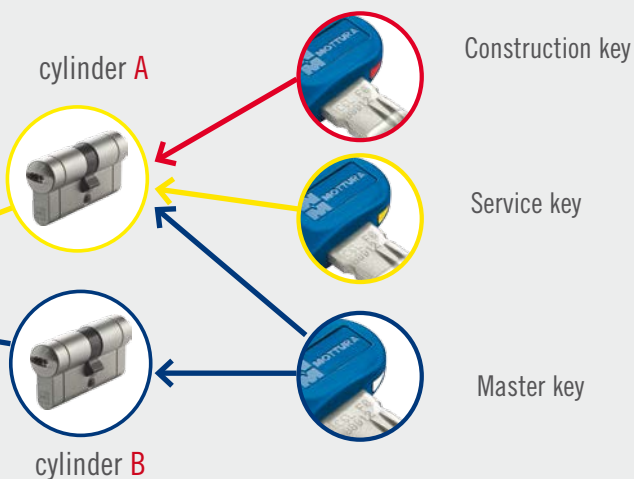
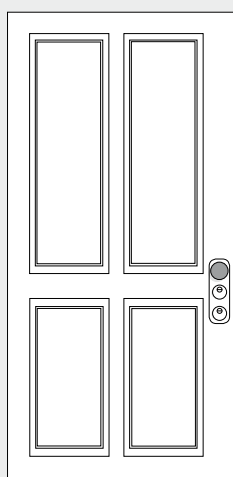
TANDEM-CA is a master key system consisting of a pair of Champions® cylinders to be installed on a double cylinder lock (multifunction):

Cylinder **A** has a service function with construction key;

Cylinder **B** has master key function.

The construction key is disabled by the two service keys (**A**).

The cylinder master key (**B**) can also open the service cylinder (**A**), *but not vice versa*.

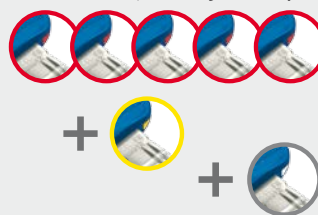


VARIO SYSTEM

Available in two versions, for any Champions® cylinder:

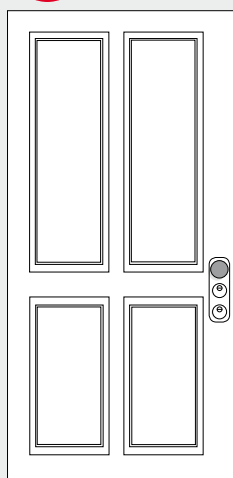
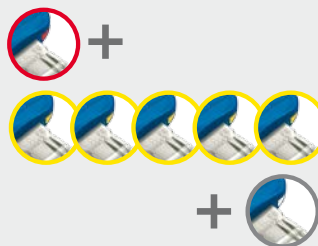
VARIO 5+1+1

There are two chances to change only the cylinder coding, without installing a new one, in case of loss or theft of the master key.



VARIO 1+5+1

One key may be used as construction key before switching to the master key cylinder coding, preserving another chance to change the key coding in case of loss or theft of the key.



safeguarding your security

CHAMPIONS

HIGH SECURITY CYLINDERS

previsti



MODULAR

Champions® MODULAR is ideal to fit all door thickness

“MATHEMATICAL” KEY + X - / AND MODULAR SYSTEM FOR BESPOKE INSTALLATIONS

LIFETIME patented MM key profile. Patented side and upper profile controls, aligned and shaped. Extendible modules, to fit any length between 31-31 and 61-71

Cylinders featured with **controlled breaking shear** in the event of break-in attempt.

Patented profile controls, aligned and shaped + X - / that, in case of picking, bumping and tracing, irreversibly block the cylinder, preventing the opening. **Tens of millions of combinations** make Champions® Modular ideal for master key systems.


Extremely hard plugs, caps and pins to increase **security against drilling**. Pins and counter-pins with **anti-pick** profiling.

Resistance to Bumping and Picking, certified by **ICIM** to the highest levels established by the VOLUNTARY reference standard.



Resistance to Tracing: coding is protected against break-in techniques based on “tracing” or “impression” of the key.



Key with **MM patented profile** 
Duplication by **MOTTURA Centres or Mottura Club**.
Customized profiles available.



Blue key grip and differently coloured round inserts.



For cylinders with “**Vario**” function (emergency key that disables the lost or stolen one) or with “**Construction Keys**” (temporary key that is disabled by the definitive keys when work is completed), **coloured triangular inserts** are supplied to identify the function.



Complete “START-UP” kit to have the necessary modules available to configure a minimum of two cylinders of any measurement.

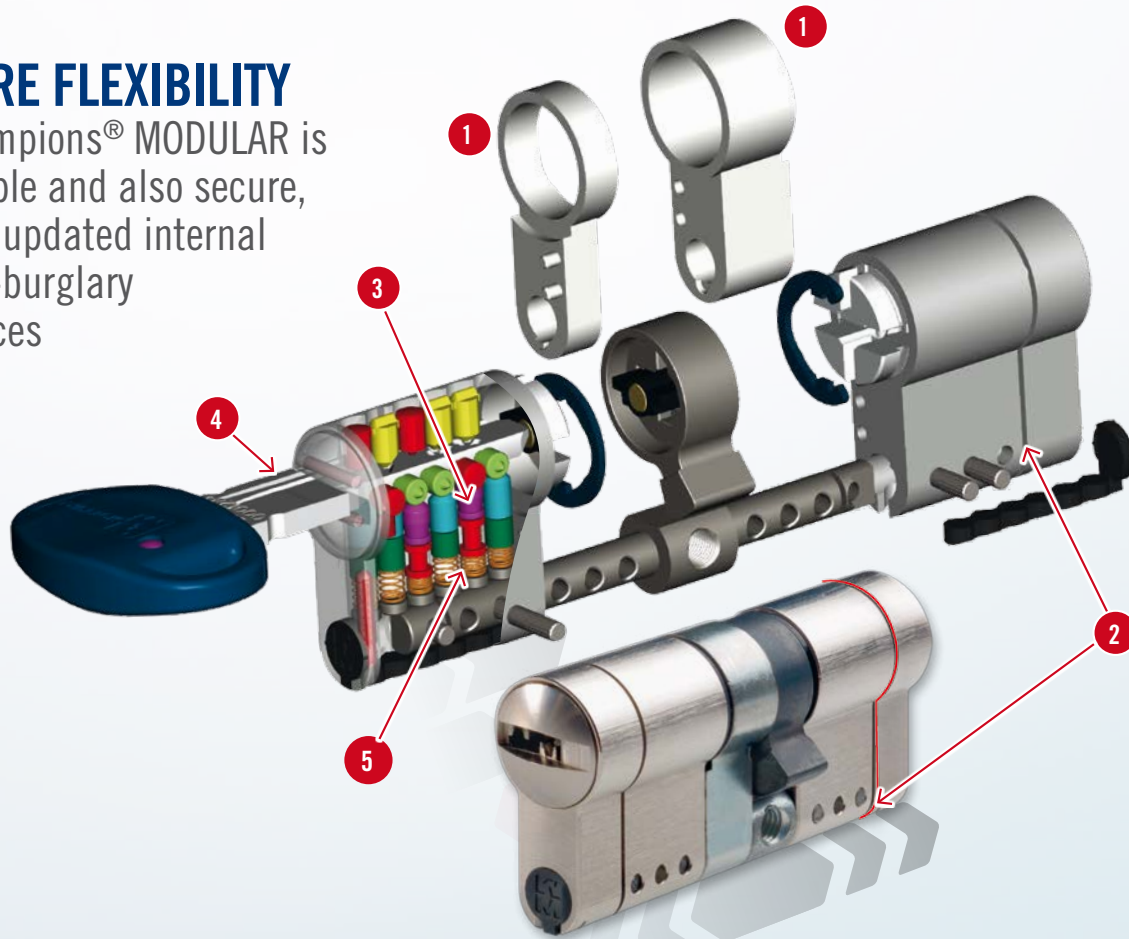
A Digital configurator is available to easily compose the measurement of any type of cylinder: key-key; blockable key; key- adjustable knob; half cylinder.

Brushed nickel-plated finish.

Brushed brass finish available on request.

MORE FLEXIBILITY

Champions® MODULAR is flexible and also secure, with updated internal anti-burglary devices



1

Extendible modules, to fit any length between 31-31 and 61-71, available for all cylinder types: key-key and frictioned key; key-adjustable knob; blockable key; half cylinder (for locks th. 14/20 mm or 30 mm).

2

Reduced section with controlled breaking **shear** in the event of break-in.

3

Resistance to bumping and picking certified by ICIM to the highest levels established by the VOLUNTARY reference standard.

4

Key with **MM patented profile** in the "Mottura" version with key duplication by **Authorised Centres** or customised version with **protected duplication** by **Mottura Clubs**

5

Resistance to Tracing: In the event of keys counterfeited through "tracing" technique, the counter-pins are "trapped", preventing the rotation of the key and the plugs, thus irreversibly blocking the cylinder.



CHAMPIONS

HIGH SECURITY CYLINDERS



C28PLUS

“MATHEMATICAL” KEY + X - / AND MOBILE ELEMENT



LIFETIME patented MM key profile. Patented side and upper profile controls, aligned and shaped. Mobile element to protect against unauthorized duplication. Protected key duplication, allowed at Mottura Club centres only.

Cylinders featured with **controlled breaking shear** in the event of break-in attempt.

Patented profile controls, aligned and shaped **+ X - /** that, in case of picking, bumping and tracing, irreversibly block the cylinder, preventing the opening. **Tens of millions of combinations** make Champions® C28PLUS ideal for master key systems.

Extremely hard plugs, caps and pins to increase **security against drilling**. Pins and counter-pins with **anti-pick** profiling.

Resistance to Bumping and Picking, certified by **ICIM** to the highest levels established by the VOLUNTARY reference standard.



Resistance to Tracing: coding is protected against break-in techniques based on “tracing” or “impression” of the key.



Key with **MM patented profile**



Key duplication at **Authorised Mottura Club Centres**.



Light blue key grip and differently coloured round inserts.

For cylinders with **“Vario”** function (emergency key that disables the lost or stolen one) or with **“Construction Keys”** (temporary key that is disabled by the definitive keys when work is completed), **coloured triangular inserts** are supplied to identify the function.

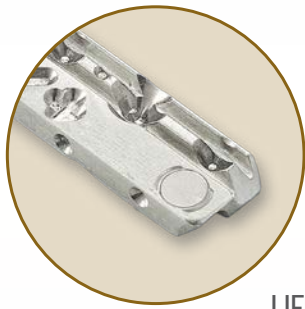
“Construction key” and **“Vario system”** as options.

Brushed nickel-plated finish.

Brushed brass finish available on request.




C39



“MATHEMATICAL” KEY AND ANTI-PICK MAGNET

LIFETIME patented MM key profile. Patented side and upper profile controls, aligned and shaped.
Pin with magnetic positioning effective against the decoding of the key.
Protected key duplication, allowed at Mottura Club centres only.

Cylinders featured with **controlled breaking shear** in the event of break-in attempt.

Patented profile controls, aligned and shaped  that, in case of picking, bumping and tracing, irreversibly block the cylinder, preventing the opening. **Tens of millions of combinations** make Champions® C39 ideal for master key systems.

Extremely hard plugs, caps and pins to increase **security against drilling**.

Pins and counter-pins with **anti-pick** profiling.

Resistance to Bumping and Picking, certified by **ICIM** to the highest levels established by the VOLUNTARY reference standard.



Resistance to Tracing: coding is protected against break-in techniques based on “tracing” or “impression” of the key.



Key with **MM patented profile**



Key duplication at **Authorised Mottura Club Centres**.



Khaki key grip and differently coloured round inserts.

For cylinders with “**Vario**” function (emergency key that disables the lost or stolen one) or with “**Construction Keys**” (temporary key that is disabled by the definitive keys when work is completed), **coloured triangular inserts** are supplied to identify the function.

“**Construction key**” and “**Vario system**” as options.

Brushed nickel-plated finish.

Brushed brass finish available on request.

CHAMPIONS

HIGH SECURITY CYLINDERS

MC43PLUS



DOUBLE CODING SYSTEM, SIDE ALIGNED PROFILE CONTROLS AND DESMODROMIC TRACK

LIFETIME patented MM key profile.

Aligned side profile controls and desmodromic track combined with rotating active pins. Protected key duplication, allowed at Mottura Club centres only.

Cylinders featured with **controlled breaking shear** in the event of break-in attempt.

Double mechanical coding system: one with spring pins, the other combined with **coaxial pins**, rotating on the desmodromic track. **Patented side aligned profile controls**, that, in case of picking, bumping and tracing, irreversibly block the cylinder, preventing the opening. With **tens of millions of combinations** it is ideal for complex master key systems.

Extremely hard plugs, caps and pins to increase **security against drilling**.
Pins and counter-pins with **anti-pick** profiling.

Resistance to Bumping and Picking, certified by **ICIM** to the highest levels established by the VOLUNTARY reference standard.



Resistance to Tracing: coding is protected against break-in techniques based on "tracing" or "impression" of the key.



Key with **MM patented profile**.



Key duplication at **Authorised Mottura Club Centres**.



Orange key grip and differently coloured round inserts.

For cylinders with **"Vario"** function (emergency key that disables the lost or stolen one) or with **"Construction Keys"** (temporary key that is disabled by the definitive keys when work is completed), **coloured triangular inserts** are supplied to identify the function.

"Construction key" and **"Vario system"** as options.

Brushed nickel-plated finish.

Brushed brass finish available on request.



MOTTURA
C48

DOUBLE CODING SYSTEM, ALIGNED PROFILE CONTROLS, DESMODROMIC TRACK AND MOBILE ELEMENT

Highest security solutions in Champions® range.
Protected and controlled key duplication, made in the factory through **Mottura Club centres only.**



Cylinders featured with **controlled breaking shear** in the event of break-in attempt.

Double mechanical coding system: one with spring pins, the other combined with **coaxial pins**, rotating on the desmodromic track. **Patented side aligned profile control** that, in case of picking, bumping and tracing, irreversibly block the cylinder, preventing the opening. With **tens of millions of combinations** it is ideal for complex master key systems.

Extremely hard plugs, caps and pins to increase **security against drilling**.
Pins and counter-pins with **anti-pick** profiling.

Resistance to Bumping and Picking, certified by **ICIM** to the highest levels established by the VOLUNTARY reference standard.



Resistance to Tracing: coding is protected against break-in techniques based on "tracing" or "impression" of the key.



Key with **MM patented profile**.



Key duplication performed at the company with a request to the **Authorized Mottura Club centres**.



Sea green key grip (standard) and shell.

For cylinders with **"Vario"** function (emergency key that disables the lost or stolen one) or with **"Construction Keys"** (with definitive key that disables the construction key) the grips have **shells of different colours** to identify the function.

"Construction key" and **"Vario system"** as options.

Brushed nickel-plated finish.

Brushed brass finish available on request.

CHAMPIONS

HIGH SECURITY CYLINDERS



PRO

EXCLUSIVE “MATHEMATICAL” KEY PROTECTION SYSTEM

- Patented side profile controls, aligned and shaped ⊕ ⊗ ⊖ ⊘
- Mottura MM patented profile
- Highest effectiveness against Bumping, Picking and Tracing
- “Vario system”, “Construction key”, “Matic 1000”, “Set & Reset” options
- Key duplication by Authorised Centres and Mottura Clubs

MODULAR

EXTENDIBLE MODULES FOR BESPOKE INSTALLATIONS

- Patented side profile controls, aligned and shaped ⊕ ⊗ ⊖ ⊘
- Mottura MM patented profile
- Extensions, to fit any door thickness
- Maximum effectiveness against Bumping, Picking and Tracing
- “Construction key” and “Vario” options
- Key duplication by Authorised Centres and Mottura Clubs

C28PLUS

MORE RELIABILITY WITH THE MOBILE ELEMENT ON THE KEY

- Key with mobile element
- Patented side profile controls, aligned and shaped ⊕ ⊗ ⊖ ⊘
- Mottura MM patented profile
- Highest effectiveness against Bumping, Picking and Tracing
- “Construction key” and “Vario” options
- Protected key duplication at Mottura Club Centres only



PRO



MODULAR



C28PLUS



C39



C43PLUS



C48



UNI EN 1303:05 ICIM CERTIFIED CYLINDER

“BUMPING, PICKING” RESISTANT

“TRACING” RESISTANT

MOTTURA MM PATENTED PROFILE

PATENTED ALIGNED PROFILE CONTROL

MODULAR AND EXTENDIBLE MODULES

A cylinder for every need



C39

HIGHER SECURITY WITH THE MAGNET PLATE ON THE KEY

- Pin with magnetic positioning
- Patented side profile controls, aligned and shaped ⊕ ⊗ ⊖ ⊗
- Mottura MM patented profile
- Highest effectiveness against Bumping, Picking and Tracing
- “Construction key” and “Vario” options
- Protected key duplication at Mottura Club Centres only

C43PLUS

DOUBLE CODING SYSTEM AND DESMODROMIC TRACK

- Double coding system
- Desmodromic track on the key combined with rotating active pins
- Patented side aligned profile controls
- Mottura MM patented profile
- Highest effectiveness against Bumping, Picking and Tracing
- “Construction key” and “Vario” options
- Protected key duplication at Mottura Club Centres only

C48

HIGHEST SECURITY SOLUTIONS IN CHAMPIONS® RANGE

- Double coding system
- Desmodromic track and mobile element
- Patented side aligned profile controls
- Mottura MM patented profile
- Highest effectiveness against Bumping, Picking and Tracing
- “Construction key” and “Vario” options
- Protected and controlled duplication, made in factory through Mottura Clubs



multidesmo

-	-	-	●	●	-
-	-	-	●	●	-
●	-	-	-	●	-
-	●	-	-	●	-
-	-	●	-	●	-
●	-	●	-	-	●

MPRO
MODULAR
C28PLUS
C39
C43PLUS
C48

MOBILE ELEMENT ON THE KEY

MAGNET PLATE ON THE KEY

DESMODROMIC TRACK

KEY DUPLICATION BY AUTHORIZED CENTRES

PROTECTED KEY DUPLICATION AT MOTTURA CLUB

CONTROLLED KEY DUPLICATION IN THE FACTORY



safeguarding your security

CHAMPIONS

HIGH SECURITY CYLINDERS



ICIM CERTIFICATION ACCORDING TO UNI EN 1303:05 STANDARD

The reference standard of Europrofile cylinder foresees various parameters, including "Key Security", "Drilling resistance", and "Cyclic Test". For each of these parameters ALL Champions® cylinders are by far higher than the limits imposed by the standard. In addition to the "standard" parameters, Champions® are also VOLUNTARILY certified as resistant to Bumping and Picking at the highest levels of resistance, by ICIM institute.




RESISTANT TO "BUMPING" AND "PICKING" BREAK-IN TECHNIQUES

The two most common manipulation techniques used on Europrofile cylinders. Bumping is based on the use of a flexible hammer that, used skilfully, causes the forced alignment of the pins and the consequent unlocking of the cylinder. Picking is the technique of decoding the key code by using picks or specific tools. All Champions® are certified as RESISTANT to Bumping and Picking to the highest levels established by the VOLUNTARY reference standard, by ICIM institute.




RESISTANT TO "TRACING" BREAK-IN TECHNIQUE

Coding is protected against manipulation based on "tracing" or "impression" techniques. The side "aligned", upper and shaped profile controls  on the keys of the various Champions® are designed in such a way that, in the event of counterfeit key, the counter-pins are "trapped" preventing the rotation of the key and the plug, irreversibly blocking the extraction of the said key or picking tool.



MOTTURA PATENTED SHAPED AND "ALIGNED" PROFILE CONTROLS

The shaped profile controls on Champions® Pro, Modular, C28Plus and C39 keys, are a unique technological innovation, patented by Mottura. The particular shape of the upper profile controls, which reproduces the mathematical signs,  protects the code of the keys, thanks to a large combination of positions within the various signs, making the decoding of the key extremely difficult.



EXTENDIBLE MODULES FOR CHAMPIONS® MODULAR

The extendible modules of Champions® Modular enable to fit, with great flexibility, any door thickness, up to a maximum of 130 mm size, (61-71). Cylinders of any type can be composed as: key/key and frictioned key; key/adjustable knob; half cylinder. The digital configurator and the "Start-up" Kit to configure a minimum of two cylinders are the available tools for the installer.



MOBILE ELEMENT ON THE KEY TO PROTECT AGAINST DUPLICATIONS

Champions® C28 Plus and C48 keys have a patented mobile element, which interacts with a special pin that permits the rotation of the key. The relative "blanks", managed and controlled at source by Mottura, are distributed exclusively to Authorized Mottura Club Centres. The controlled distribution of "blanks" and the key duplication allowed at Mottura Clubs only, are therefore the best safeguard against illegal duplication.



**ANTI-PICK MAGNET PLATE
ON THE KEY**

The magnetic pin, which interfaces with the magnet plate on the key of Champions® C39, greatly increases the security against the fraudulent decoding. In the rest position the pin is "hidden" in the cylinder body, and difficult to detect with picks. When the key is inserted, it is drawn into the correct position by the magnet plate in such a way as to enable the rotation of the plug and the subsequent unlocking and locking.



multidesmo

**DESMODROMIC TRACK COMBINED WITH
ROTATING COAXIAL PINS**

The desmodromic track of the Champions® C43 PLUS and C48 keys originates its name from the two Greek words "desmos" and "dromikós" that mean: "forcing the path". In fact, it controls the operation of the cylinder's coaxial pins along each free level of the track. Or rather: the pins are aligned during the introduction of the key, in order to find the correct position that allows the insertion and rotation of the key, within millions of possible combinations.



**LIFETIME PATENTED MM KEY PROFILE.
TO PROTECT KEY DUPLICATION**

The MM profile characterizes the section of all Champions® keys with a mirror-like MM design that recalls the MOTTURA brand. Recognizable on sight, it uniquely identifies the Champions® key among all those present on the market. The actual shape of the key thereby constitutes a further protection against illegal duplication, since the production and distribution of "blanks" through Mottura authorized dealers and Mottura Club authorized Centres is traceable and controlled.



**KEY DUPLICATION
BY MOTTURA AUTHORISED CENTRES**

Champions® Pro and Modular "blank" keys are controlled and distributed only to Authorized centres that have signed the related sales contract. Therefore the duplication is possible with original "blanks". To guarantee more protection, the owner's card that comes with each set of keys must be presented. Mottura Clubs can also fully duplicate Pro and Modular keys.



**PROTECTED KEY DUPLICATION
IN MOTTURA CLUB**

Key duplication of Champions® C28PLUS, C39, C43PLUS is carried out at authorised Mottura Club centres only, presenting the owner's card and the original key. The card is the only document certifying the legal possession of the keys and protects the owner against illegal duplication. By contract it must be exhibited when requesting duplicates and must be guarded with the utmost care. Additional duplicates of the card are not issued.



**PROTECTED AND CONTROLLED KEY
DUPLICATION IN THE FACTORY**

Key duplication of Champions® C48 is carried out directly in the factory, upon request to a Mottura Club Centre that sends the card to the factory. The duplicates and the card are then sent back to the Mottura Club Centre to be delivered to the applicant. Therefore, the control of key duplication is highly monitored, since all further duplicated keys are tracked.



CHAMPIONS

HIGH SECURITY CYLINDERS

Mottura Serrature di sicurezza SpA reserves the right to modify the characteristics of the products represented here at any time and without prior notice. The finish colours of the cylinders and keys may vary slightly from the actual products due to the photographic reproduction and printing processes.



safeguarding your security

Mottura Serrature di Sicurezza S.p.A.
Strada Antica di Francia, 34
10057 Sant'Ambrogio (Turin) Italy
www.mottura.it



Please contact with confidence the
Mottura Centres and Mottura Clubs
authorized to key duplication that
display these brands

COMPANY WITH
QUALITY MANAGEMENT
SYSTEM CERTIFIED BY
DNV GL = ISO 9001 =